

# Task 3 - Spineless Creatures

## Classifying invertebrates

1 Invertebrates are animals that do not have \_\_\_\_\_.

2 Identify these main groups of invertebrates:

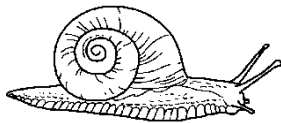
a These all have jointed legs. \_\_\_\_\_

b These crawl on a single fleshy pad. \_\_\_\_\_

c These have bodies divided into five parts. \_\_\_\_\_

d These have round worm-like bodies divided into segments.  
\_\_\_\_\_

3 On the line underneath each picture, write down which group of invertebrates the animal is in.



\_\_\_\_\_



\_\_\_\_\_

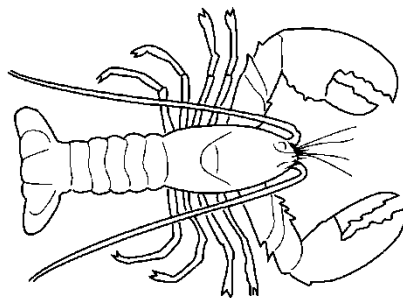


\_\_\_\_\_



\_\_\_\_\_

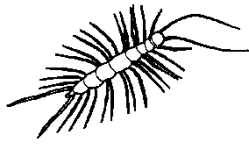
4 On the diagram below, label two features that show that this animal is an arthropod.



## The Arthropods

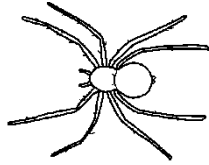
Arthropods are split into four groups: crustaceans, insects, arachnids, and centipedes and millipedes. **Crustaceans** have chalky shells and 10–14 legs (although one pair of legs might be pincers). **Insects** have six legs and bodies divided into three parts. **Arachnids** have eight legs and bodies in two parts. **Centipedes** and **millipedes** are long and thin and have many legs.

1 Look at the pictures below. On the line underneath each one, write the word crustacean, insect, arachnid or centipede/millipede.



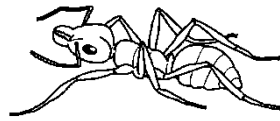
*Lithobius*

\_\_\_\_\_



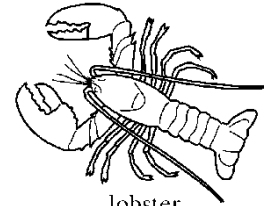
spider

\_\_\_\_\_



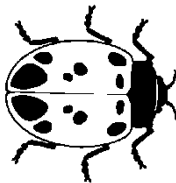
ant

\_\_\_\_\_



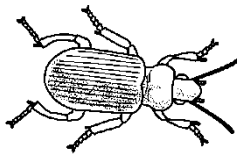
lobster

\_\_\_\_\_



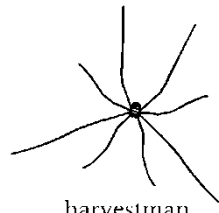
ladybird

\_\_\_\_\_



beetle

\_\_\_\_\_



harvestman

\_\_\_\_\_



crab

\_\_\_\_\_

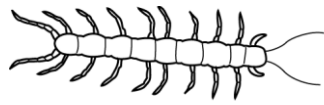
2 Fill in the bar chart to show the different numbers of each group in the pictures above.

Number found			
	crustaceans	insects	arachnids
			centipedes/ millipedes

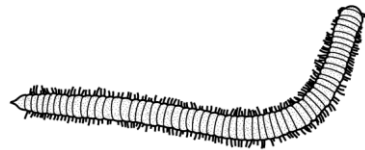
3 Where do most crustaceans live?

\_\_\_\_\_

- 4 Look at the pictures below. Write down the differences between a centipede and a millipede.



centipede



millipede

---

---