



S1 Science: Creative Cell Modelling

Use the ideas and information below to create a 3D model of a plant or animal cell that represents its parts and structure. Don't forget labels!

Here are some examples of plant or animal cell models you could make:



What are the features of a good scientific cell model?

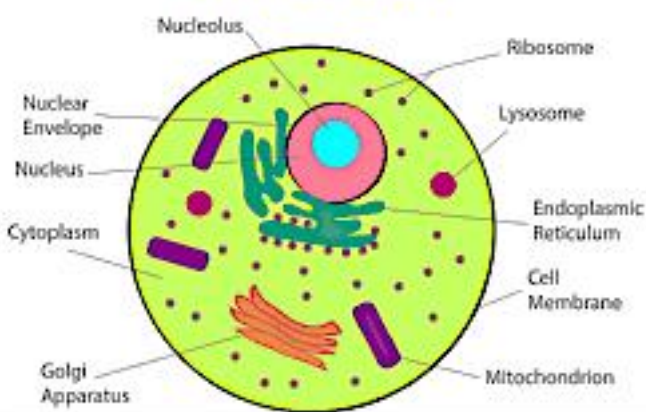
- 1) It should be **big enough** to see all the parts clearly.
- 2) The shapes and structures should **represent the real cell** as best as possible.
- 3) **Labels should be used** to show what each part is.

Task Instructions:

Using all the inspiration on this sheet and the diagrams below (or any online), make a plant or animal cell model in any material of your choice (edible or not!).

Upload a photo to Teams!

Animal Cell



Plant Cell

